



Changes to hospital services

What do you think?



easy
read



Contents

Page

Introduction 3

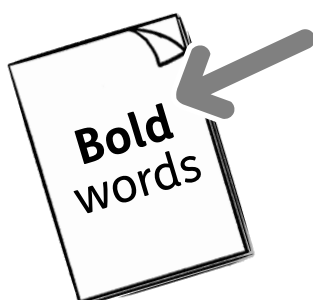
Why we want to change 4

What we want to do 5

The services that could change 9

What do you think? 17

For more information 18



In this Easy Read document, difficult words are in **bold**. We explain what these words mean in the sentence after they have been used.



Some words are [blue and underlined](#). These are links which will go to another website which has more information.

Introduction



The NHS is thinking about making changes to some hospital services in Liverpool.

This will affect:



- Aintree University Hospital.



- Broadgreen Hospital.



- The Royal Liverpool University Hospital.



We would like to know what you think.

Why we want to change



Our hospitals provide lots of different services.



This means each hospital has to have lots of staff and equipment to provide good services.



Sometimes, hospitals don't have enough staff or equipment and patients don't get care that is as good as other places.



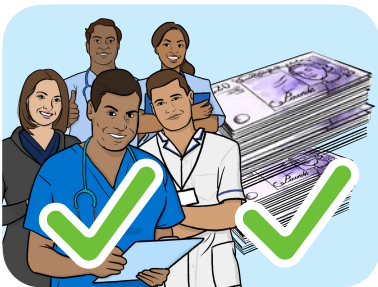
We have been looking at how staff in different hospitals can work together, to help patients get the best care.

What we want to do



We want staff who know a lot about some types of care to work together more.

This will:



- Make the most of the staff and money we have.



- Mean that all patients get the same good care.



If the changes went ahead, some patients would go to a different hospital than they do now.

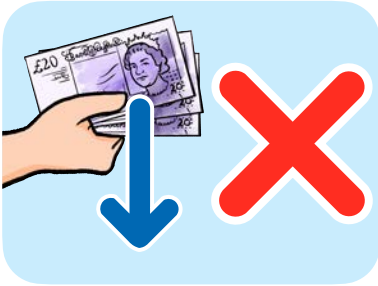


This will mainly affect patients who need:

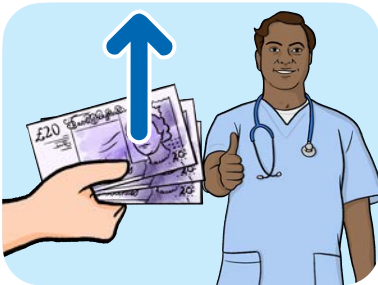
- Complicated care.



- To stay overnight in a hospital.

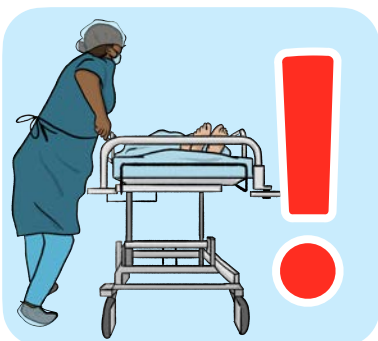


These changes won't mean we spend less money.



Some services will get more money to help them provide care.

Aintree University Hospital



We want Aintree Hospital to mainly work on **emergency care**.

Emergency care is serious care that needs to happen right away.

Aintree Hospital is already very good for:



- Caring for people who have had very bad injuries.



- Caring for people who have injured their brain.



Aintree Hospital will still have an accident and emergency department (A&E). This is a part of a hospital where people go if they need care right away.

Broadgreen Hospital

Broadgreen Hospital will mainly help people with:



- Getting back to normal after needing care, like learning how to walk again.



- Problems with their bones.

The Royal Liverpool University Hospital



The new Royal Liverpool Hospital will mainly work on complicated **planned care**.

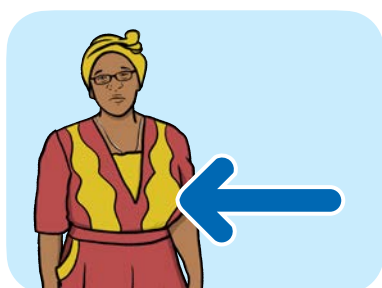
Planned care is care that people have needed for a while, like cancer care.



The Royal Liverpool Hospital will still have an A&E department.

The services that could change

Breast surgery



Breast surgery is sometimes needed when there is a problem with the breasts. Like, when there is cancer.



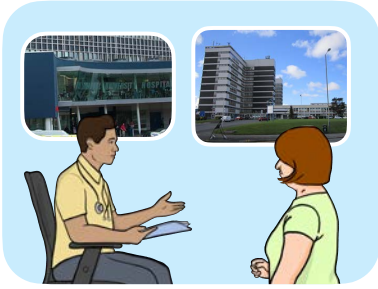
The Royal Liverpool Hospital and Broadgreen Hospital both do breast surgery.



Before 2022, Aintree Hospital also did breast surgery.



Broadgreen Hospital is in charge of checking breasts for cancer.



Aintree Hospital and The Royal Liverpool Hospital are where people go when they have a problem with their breasts which needs to be looked at.

We want:



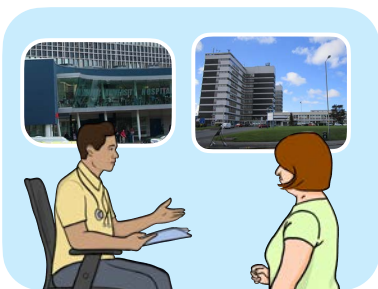
- All breast surgery to happen at The Royal Liverpool Hospital.



- Aintree Hospital to stop doing breast surgery.

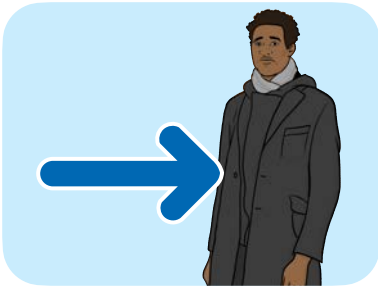


- Broadgreen Hospital to stay in charge of checking breasts for cancer.



- Aintree Hospital and The Royal Liverpool Hospital to carry on being where people go when they have a problem with their breasts which needs to be looked at.

General surgery



General surgery is surgery for the organs in your tummy.



Planned general surgery and emergency general surgery both happen at Aintree Hospital and The Royal Liverpool Hospital.



Broadgreen Hospital only provides planned general surgery.

We want:



- Aintree Hospital to mainly give people emergency general surgery.



- The Royal Liverpool Hospital to mainly give people planned general surgery.

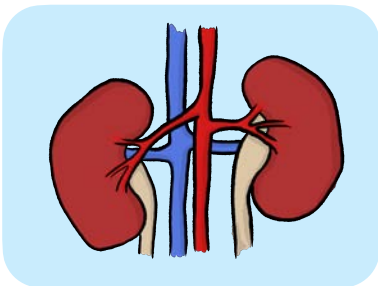


Some people would still have emergency general surgery at The Royal Liverpool Hospital if they are too unwell to travel to Aintree.



- Broadgreen Hospital to stop doing planned general surgery.

Kidneys



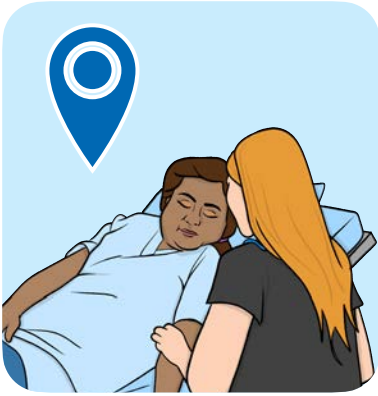
Kidneys are organs in the middle of your body. They take harmful things out of your blood.



Aintree Hospital and the The Royal Liverpool Hospital both have kidney services.



Treatment for people whose kidneys don't work properly is called dialysis.



There are places to get dialysis at:

- Broadgreen Hospital.
- St Helens Hospital.
- Warrington Hospital.
- Halton Hospital.
- Aintree Hospital.
- Waterloo Hospital.
- Southport Hospital.

We want:



- There to be a new place for kidney services in The Royal Liverpool Hospital.



- People to stop going to Aintree Hospital with kidney problems which meant them staying overnight.



- Places where people get dialysis to carry on as they are.

Urology



Urology is care for the part of your body where wee comes out. This includes men's penises.



People who need to stay overnight for urology care can go to The Royal Liverpool Hospital and Aintree Hospital.



People who do not need to stay overnight for urology care can go to Broadgreen Hospital and Aintree Hospital.



We want:

- All care for people who need to stay overnight to happen at The Royal Liverpool Hospital.

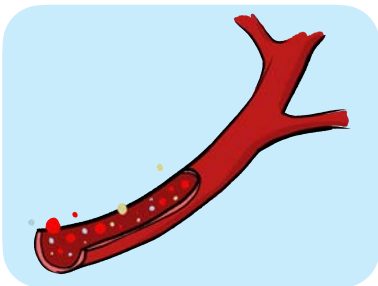
- Care for people who do not need to stay overnight to:



- Happen at The Royal Liverpool Hospital and Aintree Hospital.



- Stop happening at Broadgreen Hospital.



Vascular surgery

Vascular surgery is care for the parts of your body that carry blood, like veins.



The main place for this is The Royal Liverpool Hospital.



There are places that people can get care without staying in hospital overnight in:

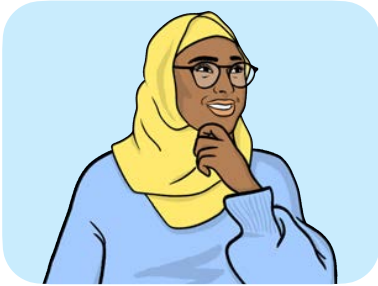
- Aintree Hospital.
- Whiston Hospital.
- Southport Hospital.
- Liverpool Heart and Chest Hospital.

We want:



- All emergency care to move from The Royal Liverpool Hospital to Aintree Hospital.
- The places that people can get care without staying overnight to carry on.
- The Royal Liverpool Hospital to start giving people care where they don't need to stay overnight.

What do you think?



We want to know what you think about our plans.



Your answers will help us to decide what to do.



To tell us what you think you can answer the questions in our online survey:

www.futureLUHFT.nhs.uk

For more information

If you need more information, please contact us by:



- Phone: 0151 247 6406



- Text: 07920 206 386



- Email: future.LUHFT@nhs.net



For more information, go to:

www.futureLUHFT.nhs.uk

This Easy Read information has been produced by easy-read-online.co.uk